

CBK 140

42M /138', CBK SUPER YACHTS, 2017



Builder	CBK SUPER YACHTS	Location	Istanbul / Turkey
Length	42m/138'	Price	Please Enquire
Beam	8.5m/27' 10"		
Draft	2m/5' 10"		
Year	2017 (New)		
Material	Epoxy Laminated Wood		
Superstructure	Wood		
Engines	2 x MTU 1,500HP		
Cruising speed	11 knots (approx)		
Max speed	16 knots (approx) 1,800		
Range	nm (approx)		
Accommodation	12 guests in 6 cabins		
Flag	N/A		
Class	RINA Charter Class		

INDEX

- 1. CONSTRUCTION**
- 2. MAIN CHARACTERISTICS**
 - General
 - Capacities
- 3. MACHINERY**
 - Generators
 - Electricity
 - Air Conditioning
 - Other Machinery
- 4. ACCOMMODATION**
- 5. GALLEY & LAUNDRY EQUIPMENT**
- 6. COMMUNICATION, NAVIGATION & ENTERTAINMENT EQUIPMENT**
 - Navigation Equipment
- 7. TENDERS & WATERSPORTS EQUIPMENT**
- 8. SAFETY & SECURITY EQUIPMENT**
- 9. EXCLUSIONS**
- 10. GENERAL ARRANGEMENTS**
- 11. PHOTOGRAPHS**

1. CONSTRUCTION

Wood lamination and epoxy fiber coating.

2. MAIN CHARACTERISTICS

General

BUILDER:	CBK SUPER YACHTS
YEAR:	2017
LOA:	42m/138'
BEAM:	8.5m/27' 10"
DRAFT:	2m/5' 10"
CLASSIFICATION:	Rina Charter Class
GROSS TONS:	376 Tons
DISPLACEMENT:	187
HULL COLOUR:	White

Capacities

CRUISE SPEED:	11 Knots (approx)
MAXIMUM SPEED:	16 Knots (approx)
RANGE:	1800 nm (approx)
FUEL CAPACITY:	3 x 6,000 Litres (1,585 US Gallons)
WATER CAPACITY:	6,000 Litres (1,585 US Gallons)
BLACK WATER CAPACITY:	3,000 Litres (792 US Gallons)
GREY WATER CAPACITY:	3,000 Litres (792 US Gallons)
FUEL CONSUMPTION:	500 l/h at 16 knots / 110 l/h at 11 Knots

3. MACHINERY

ENGINES:	2 x MTU 1,500HP
ENGINE MODEL:	MTU V 10 2X 1500HP
ENGINE HOURS:	Port: 236hrs (16-Feb-2016) Starboard: 236hrs (16-Feb-2016) 2000 nm at 9 knots / 1800 nm at 11 knots / 600 nm at 16 knots
FUEL:	DIESEL
PROPULSION:	PROP SHAFT

Generators

GENERATORS:	GENERATOR 1 60 kw / WESTERBEKE GENERATOR 2 60 kw / WESTERBEKE GENERATOR 3 18 kw / WESTERBEKE
-------------	---

Electricity

BATTERIES:	BATTERY CHARGER 1 :100 Amp / VICTRON SKYLLA 24/100 BATTERY CHARGER 2 :100 Amp /
------------	---

VICTRON SKYLLA 24/100
BATTERY CHARGER 3 :30 Amp /
VICTRON CENTAUR 12/30

SERVICE BATTERIES :12 x 250 A / 24 V / SUNNYWAY
ENGINE BATTERIES :4 x 250 A / 24 V / BANNER BULL
GENSET BATTERIES :3 x 150 A / 12 V / BANEER BULL
RADIO BATTERIES :2 x 250 A / 12 V / SUNNYWAY

Air Conditioning

360.000 btu / CRUISEAIR CHILLER SYST.

Other Machinery

WATERMAKER 1 : 220 l/h / Aquateq
BOILER 1 : 100 liters
TOILETS : 11 x electric / Tecma
WINDLASS 1 :Hydraulic/ Data
WINDLASS 2 :Hydraulic/ Data
ANCHOR 1 :240 kg / Private stainless steel
ANCHOR 2: 240 kg / Private stainless steel
CHAIN 1 : 200 metres of 18 mm
CHAIN 2 : 200 metres of 18 mm

4. ACCOMMODATION

The cabins include one Master cabin, two VIP cabin, 2 guest twin cabins and a double bed guest cabin.

5. GALLEY & LAUNDRY EQUIPMENT

All equipment is manufactured by Miele

- Oven
- Extractor
- 2 x Freezer
- 2 x Icemaker
- Cooking Plate
- Microwave
- 2 x Fridge total 850 lt /Sub Zero
- 2 x Freezer total 400 lt / MIELE •
- 2 x Washing machine and dryer

6. COMMUNICATIONS, NAVIGATION & ENTERTAINMENT EQUIPMENT

Navigation Equipment

- Magnetic Compass
- Navigation Pack
- Chart Plotter
- Depth Sounder
- Gyro Compass
- GPS
- Autopilot
- Weather Fax

- Radar

7. TENDERS & WATERSPORTS EQUIPMENT

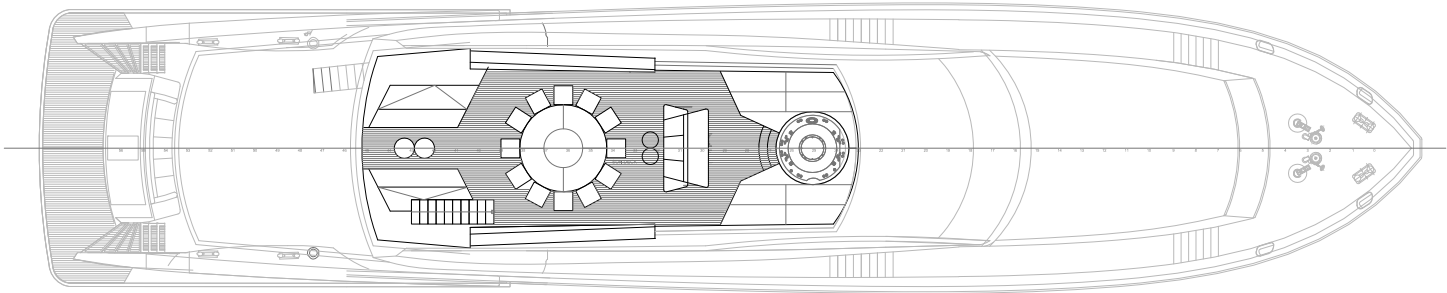
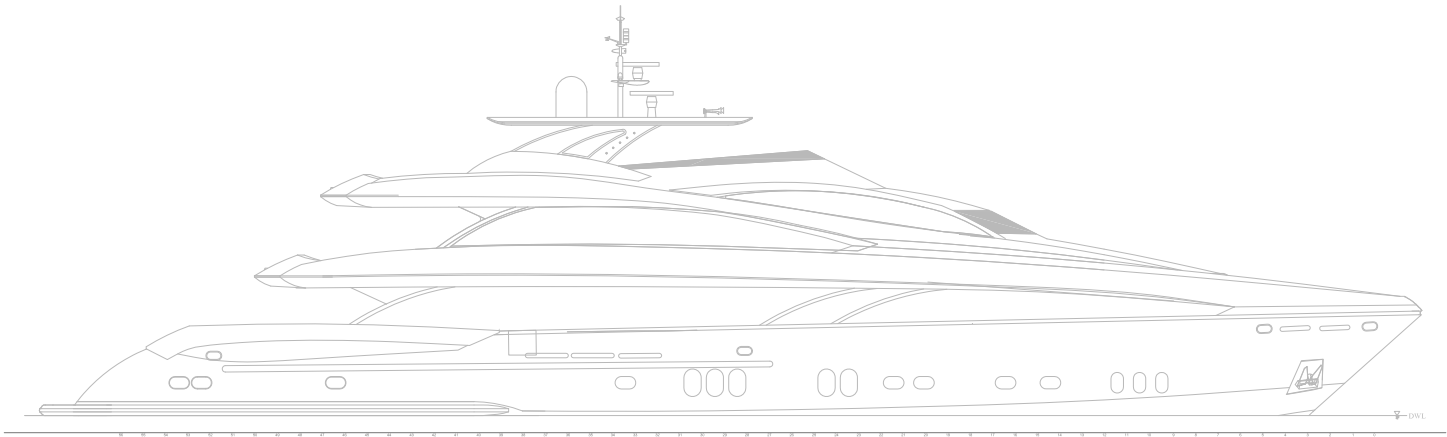
- 5.2m Zodiac Tender with 50hp Honda engine
- 135hp Seadoo

8. SAFETY & SECURITY EQUIPMENT

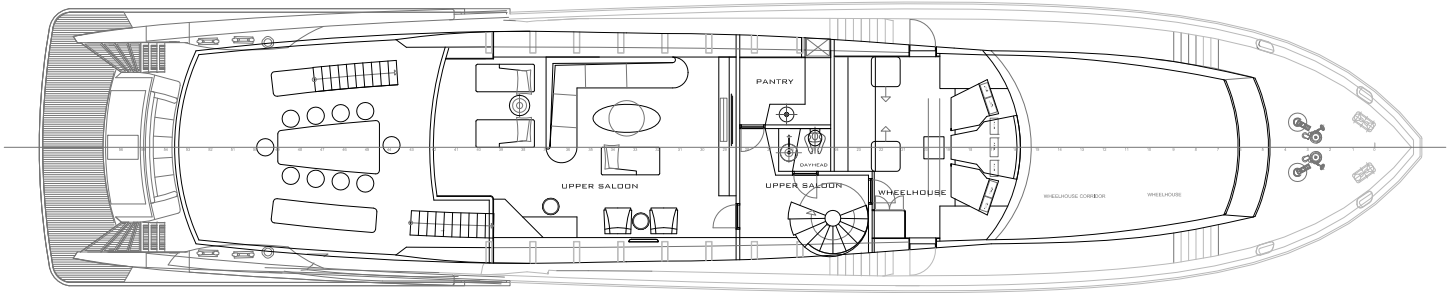
- Fire Alarm System - Milmet CO2
- Extinguishers 14
- Liferafts
- Water alarm system- Atomation
- Auto pumps system 3
- Video Cameras - Samsung 5

9. EXCLUSIONS

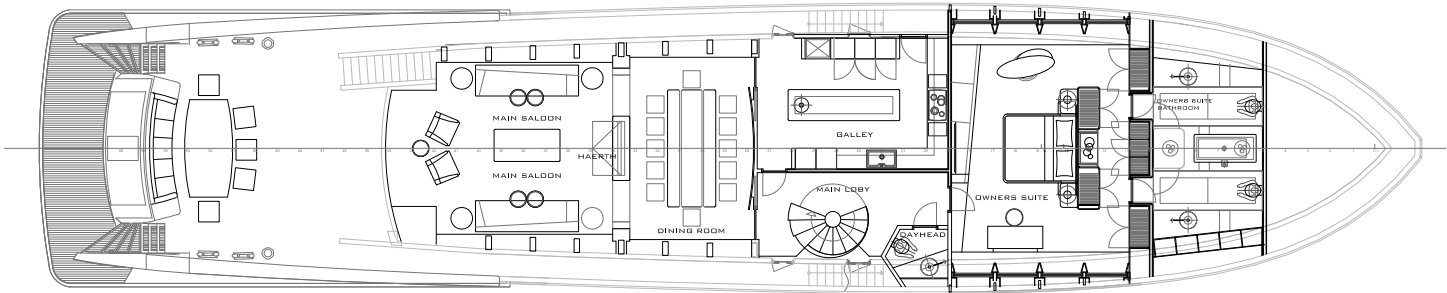
A complete list of exclusions is available upon request.



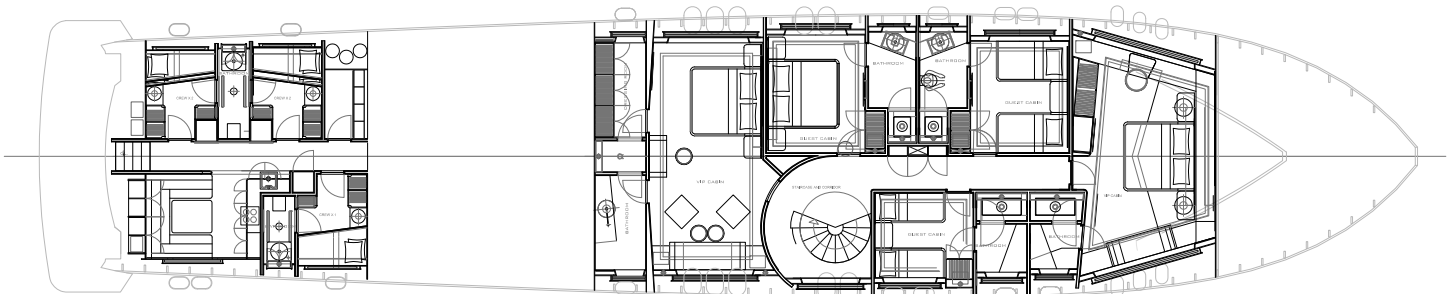
SD PLAN 1/50



UD PLAN 1/50



MD PLAN 1/50



LD PLAN 1/50

11. PHOTOGRAPHS







